

VARIABILITY OF THE LOW LEVEL
JET AND METEOROLOGICAL
SYSTEMS OVER SOUTH AMERICA
DURING THE SALLJEX
JANUARY 2003

Iracema F.A. Cavalcanti, Pedro S.
Dias, Maria Assunção S. Dias,
Celeste Saulo, Matilde Nicolini,
Jose A. Marengo, Dirceu Herdies

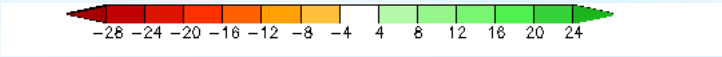
TYPICAL EVENTS DURING THE PERIOD

- CCM
- SHORT WAVE DISTURBANCE
- SACZ
- ULCV
- FRONTAL SYSTEMS

ANALYSIS AND FORECAST

- GLOBAL MODELS
CPTEC, NCEP
- REGIONAL MODELS
ETA, RAMS

- MERIDIONAL WIND VARIABILITY IN THE LLJ REGION
- VARIABILITY OF SACZ, ULCV, MCS
- FORECAST FROM MODELS

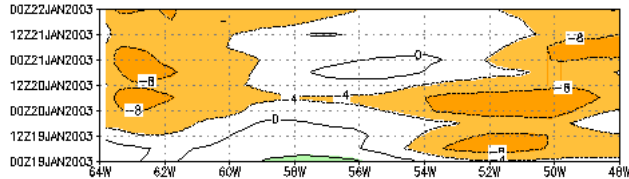


ETA CPTEC

40 km

Diagrama de Hovmoller con latitud fija
velocidad meridional en 850 hPa.

18S



19-22 JAN

22S

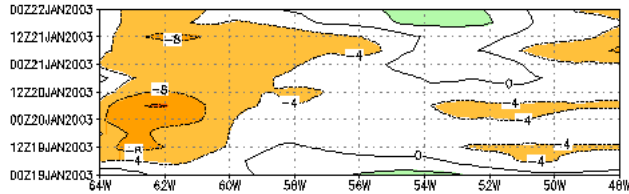
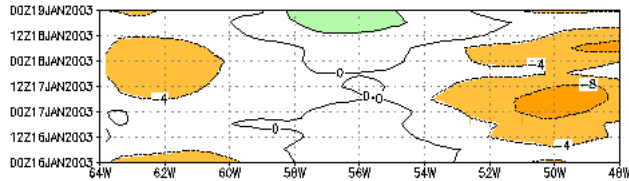


Diagrama de Hovmoller con latitud fija
velocidad meridional en 850 hPa.

18S



16-19 JAN

22S

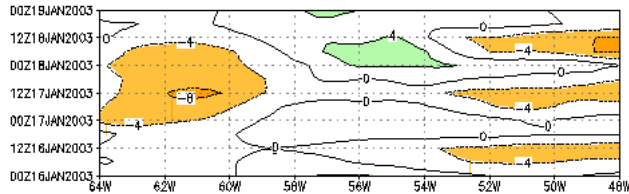
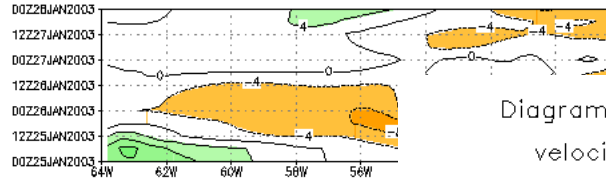


Diagrama de Hovmoller con latitud fija
velocidad meridional en 850 hPa.

18S



25-27 JAN

22S

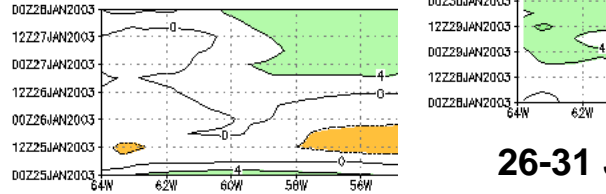
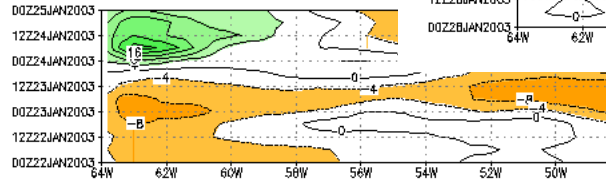


Diagrama de Hovmoller
velocidad meridional

18S



22-25 JAN

22S

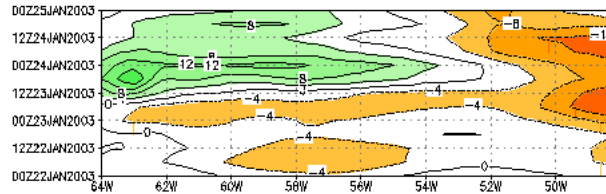
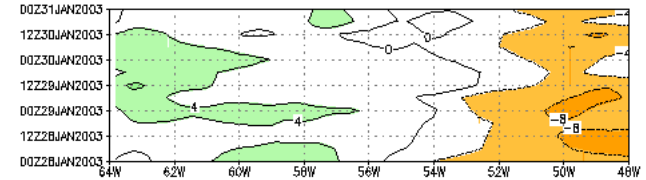


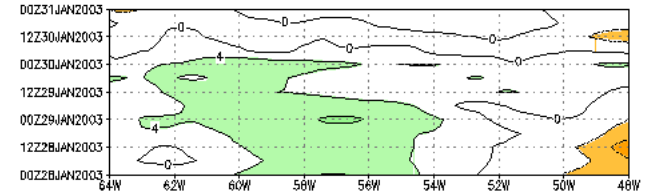
Diagrama de Hovmoller con latitud fija
velocidad meridional en 850 hPa.

18S

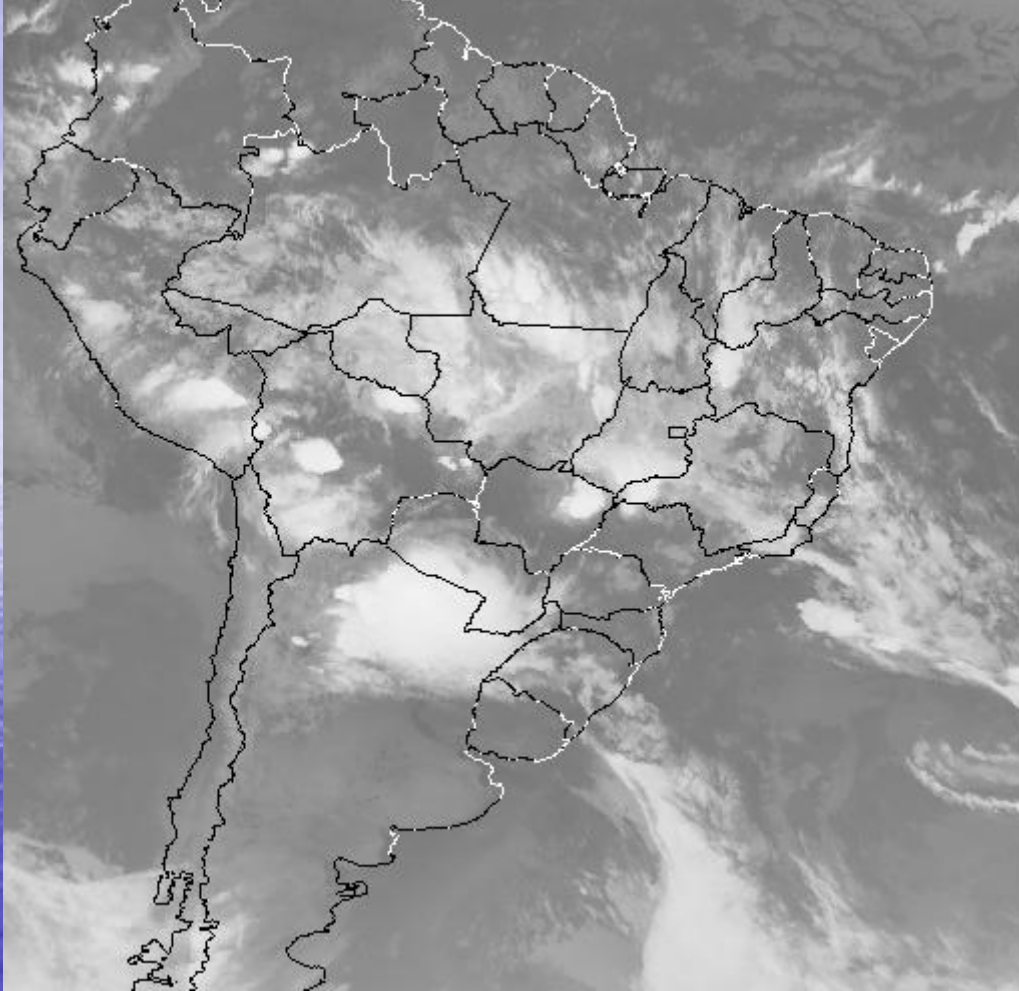


26-31 JAN

22S



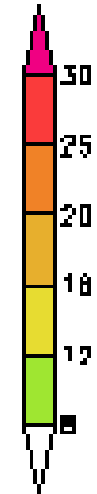
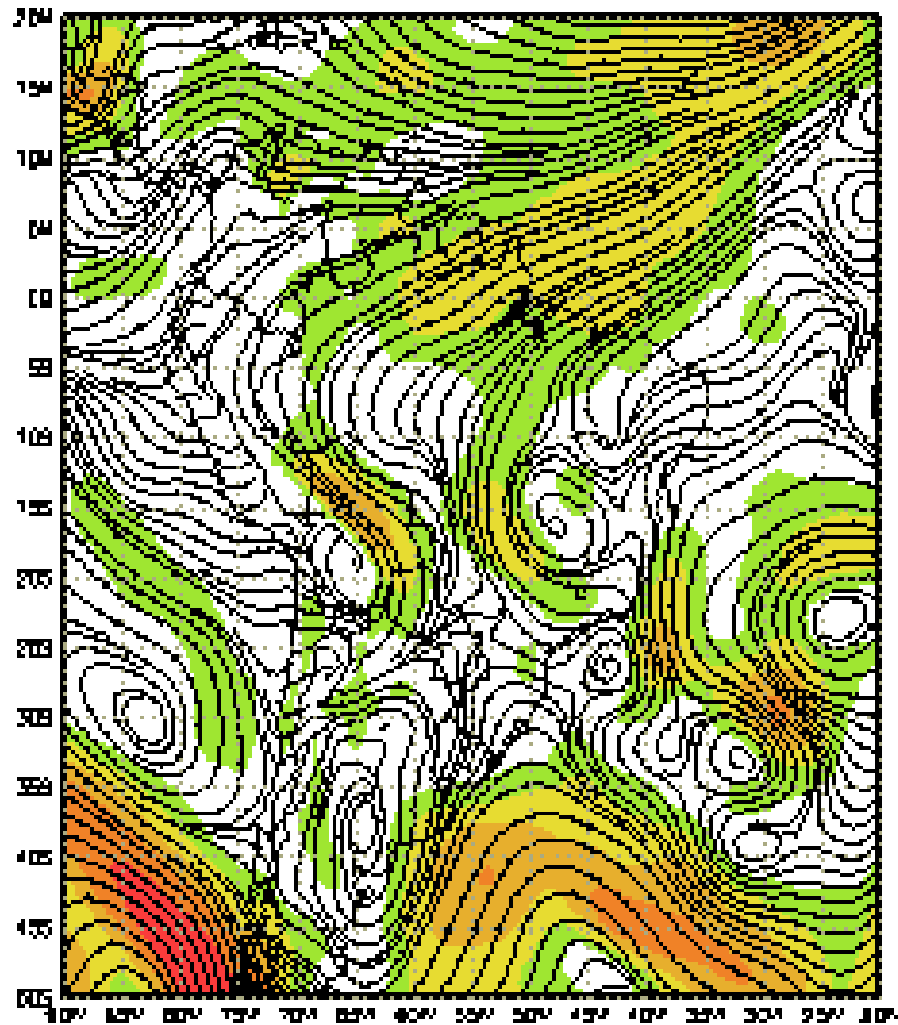
INPE/CPTEC G-8 IR 18/01/03 0609Z



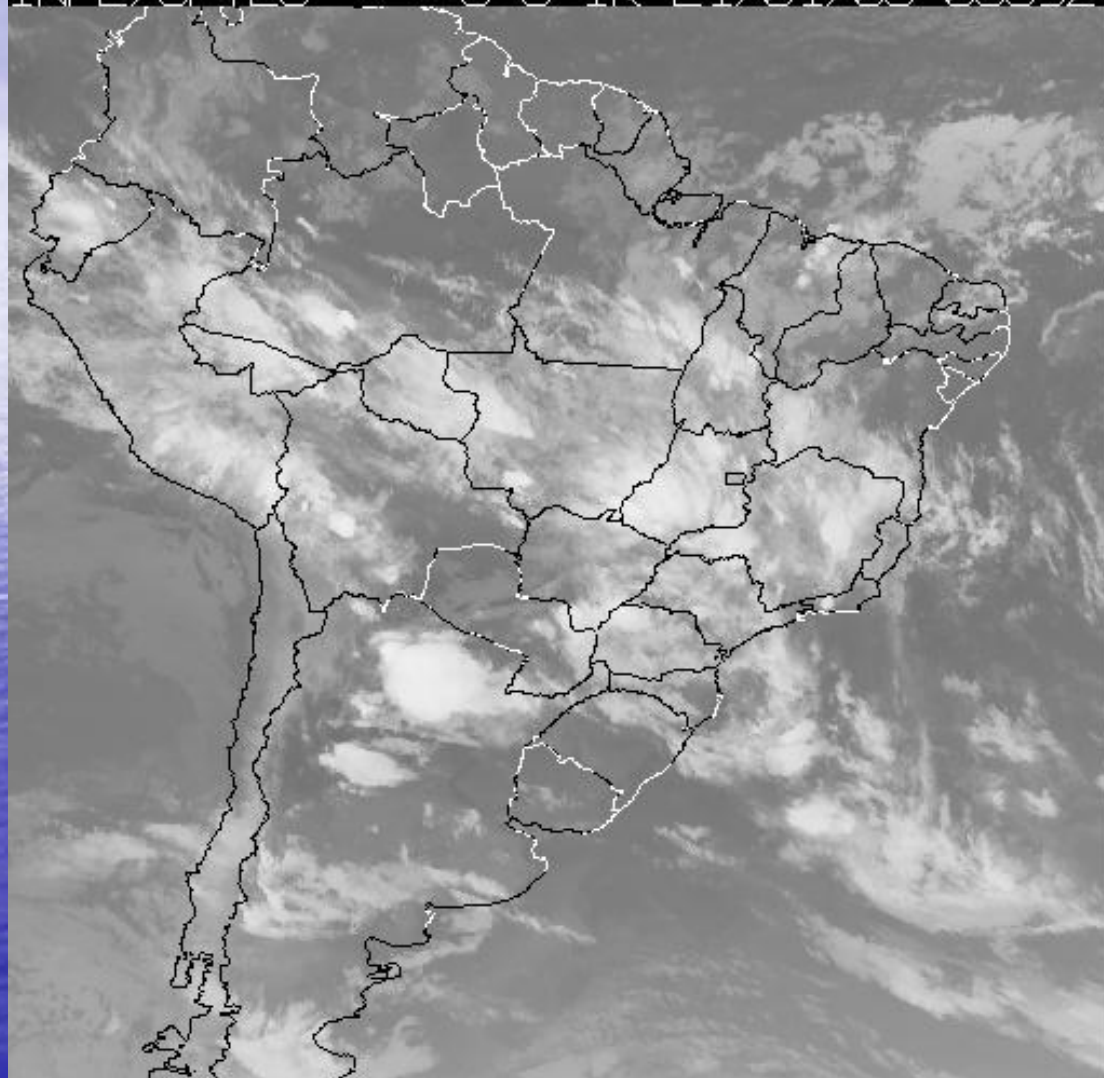
18 JAN 06:09
GMT

- Strong Mesoscale
- Convective System

V 850 mb - T126L28 - Jan 18 06Z - SALLJEX



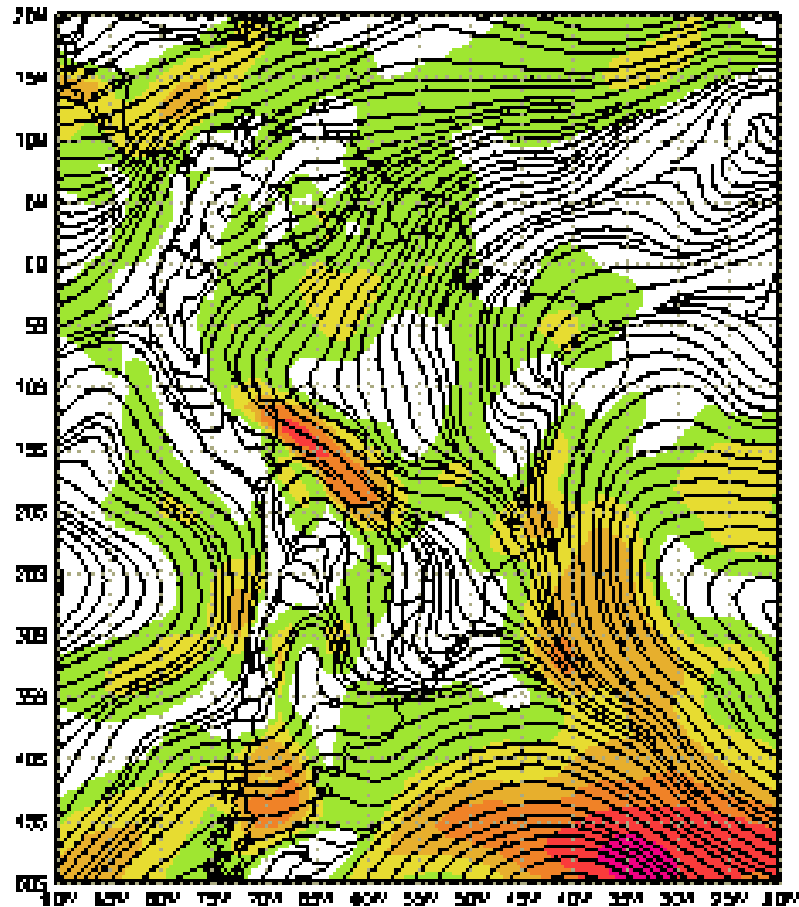
INPE/CPTEC G-8 IR 21/01/03 0339Z



21 JAN
03:39GMT

CCM

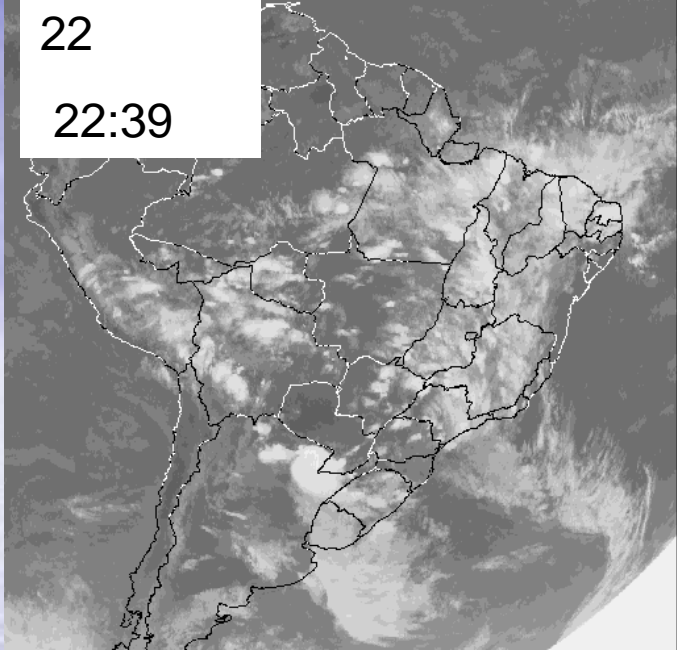
V 850 mb - T126L28 - Jan 21 06Z - SALLJEX



INPE/CPTEC G-8 IR 22/01/03 2239Z

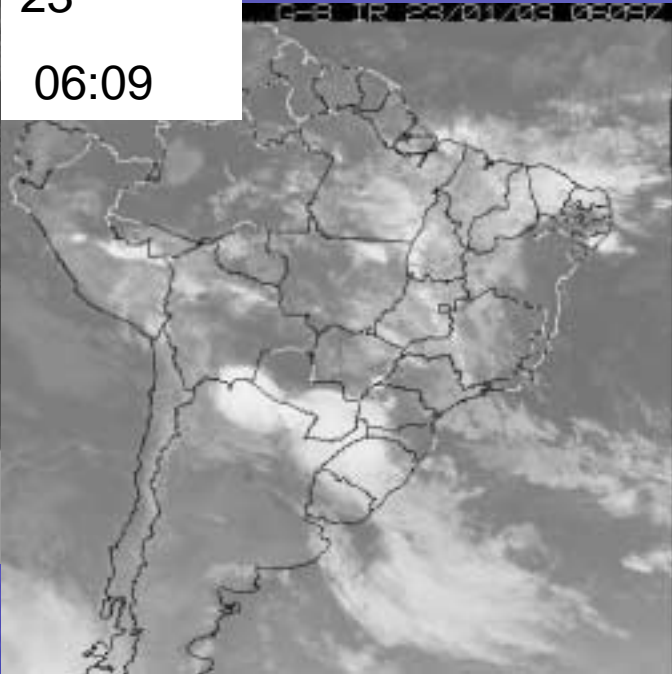
22

22:39



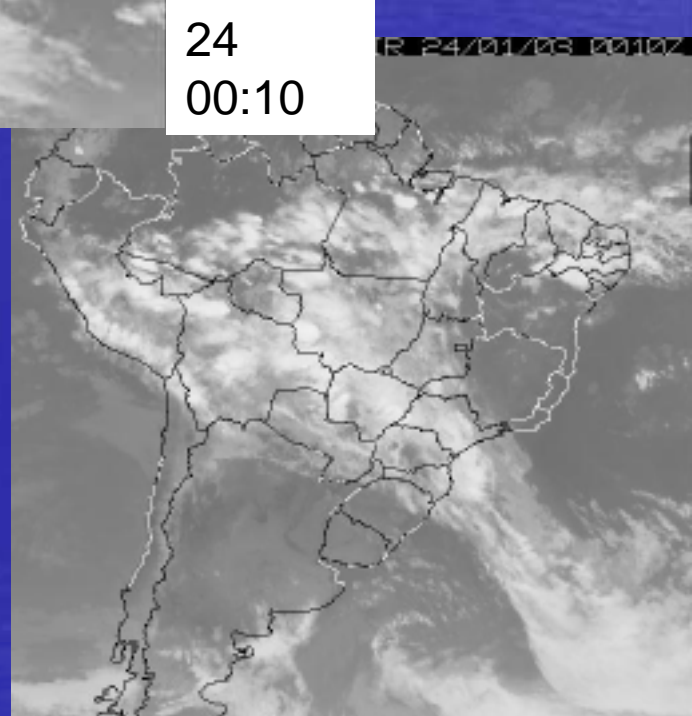
23

06:09

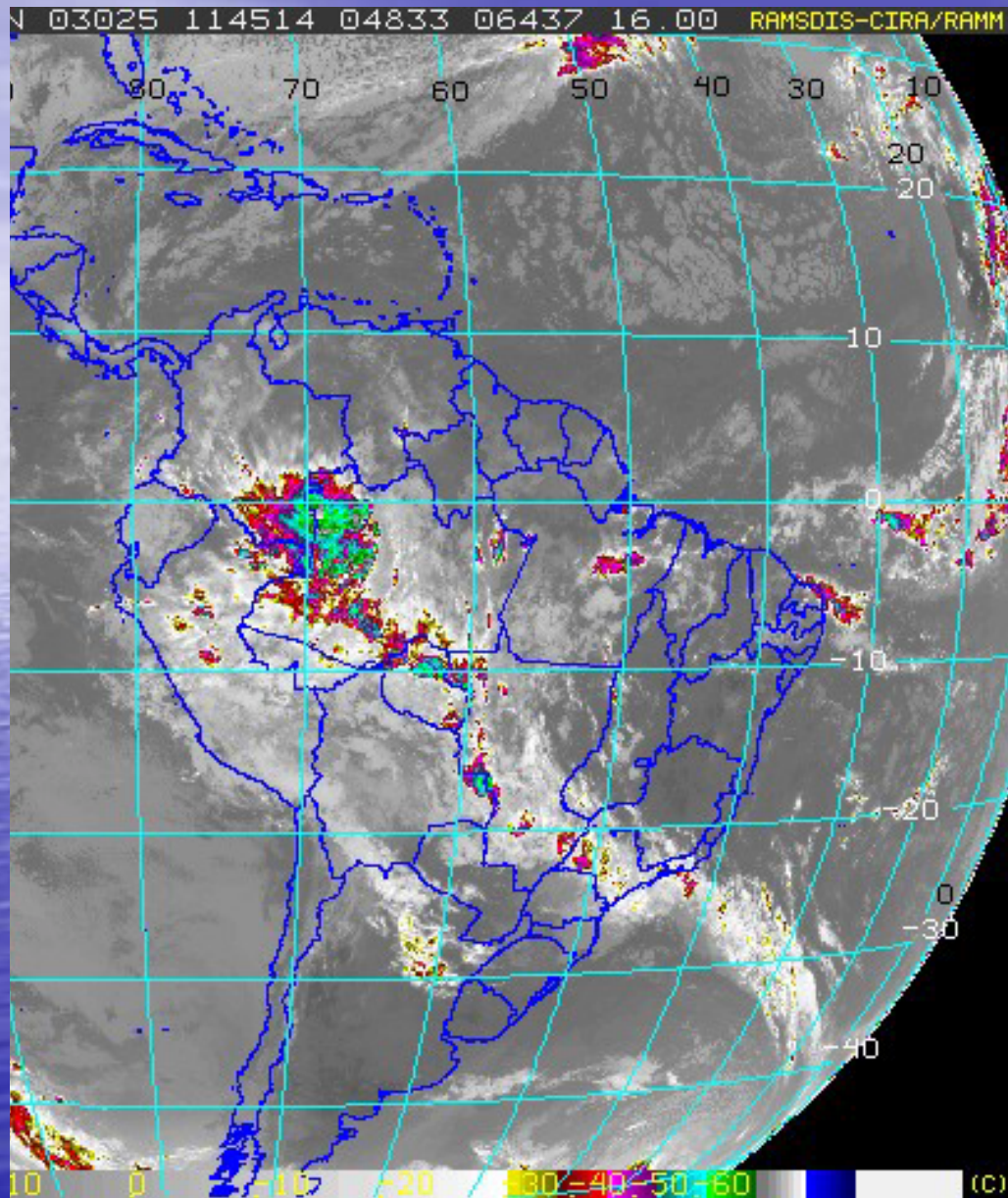


24

00:10

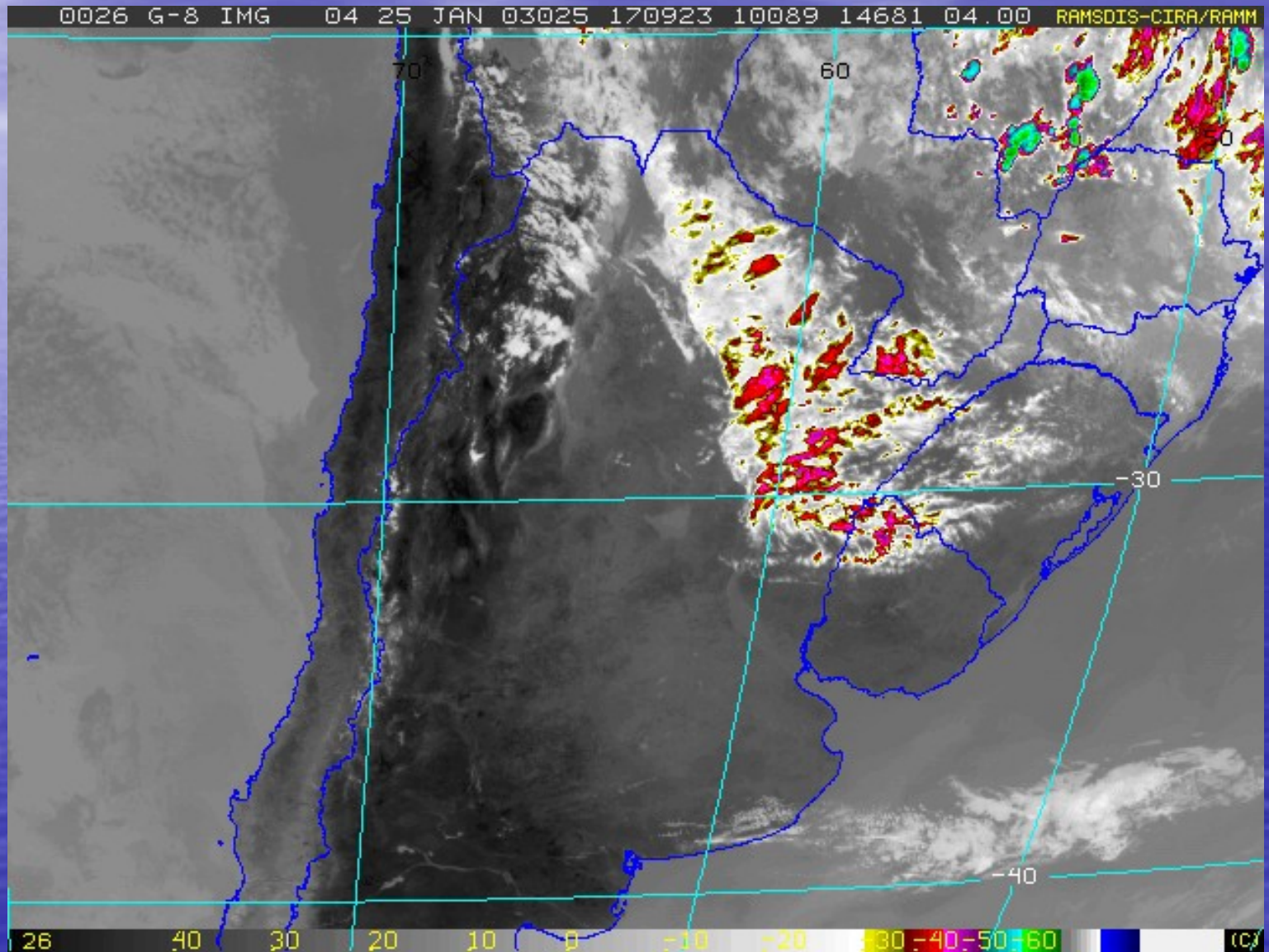


25 JANUARY 11:45 GMT



**SHORT WAVE
DISTURBANCE**

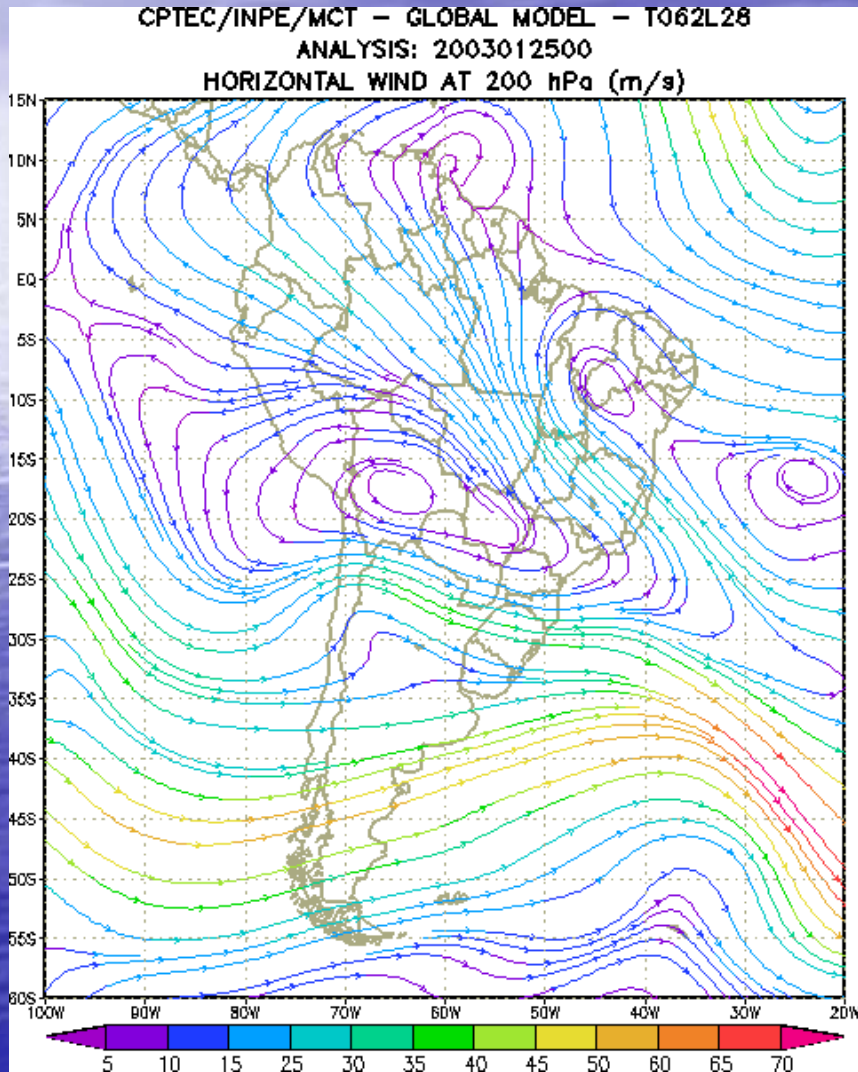
25 JANUARY 17:09 GMT



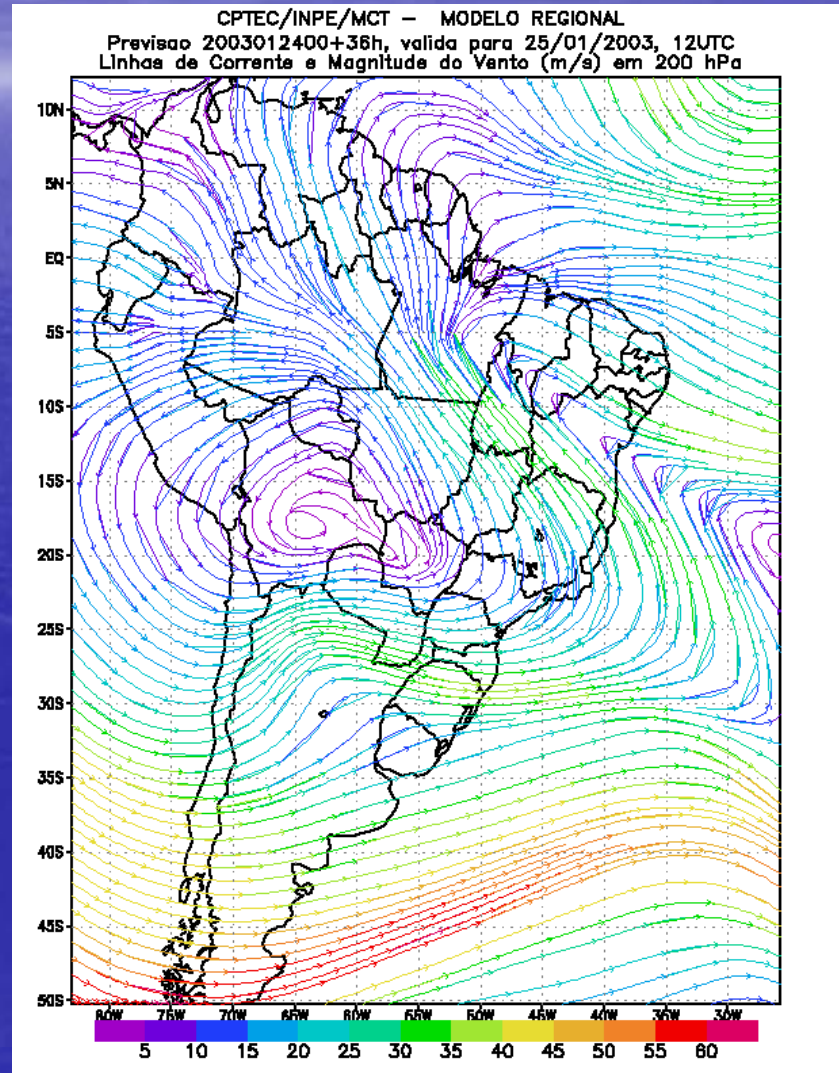
200 hPa

ANALYSIS

25 JANUARY

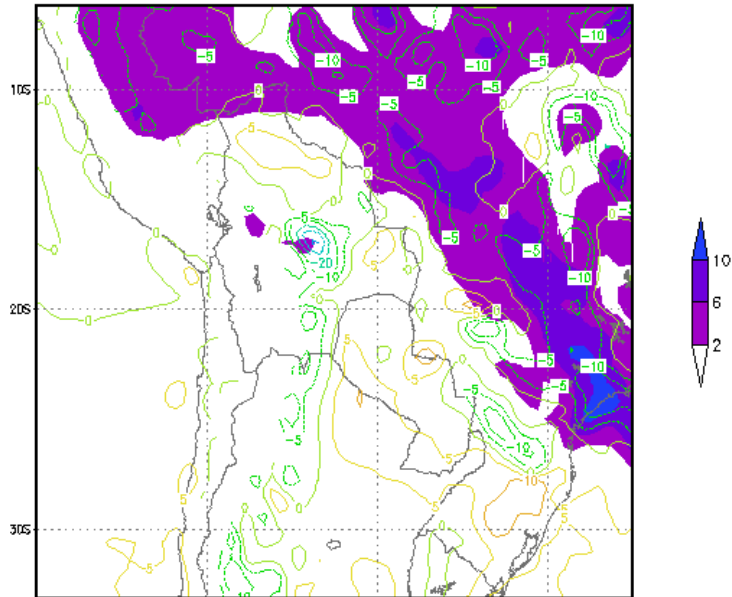


FORECAST 24 TO 25 JAN

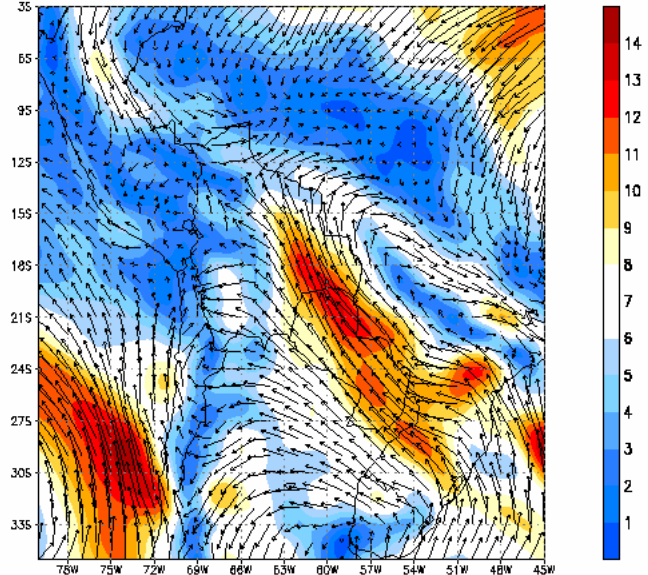


FORECAST 27 TO 29

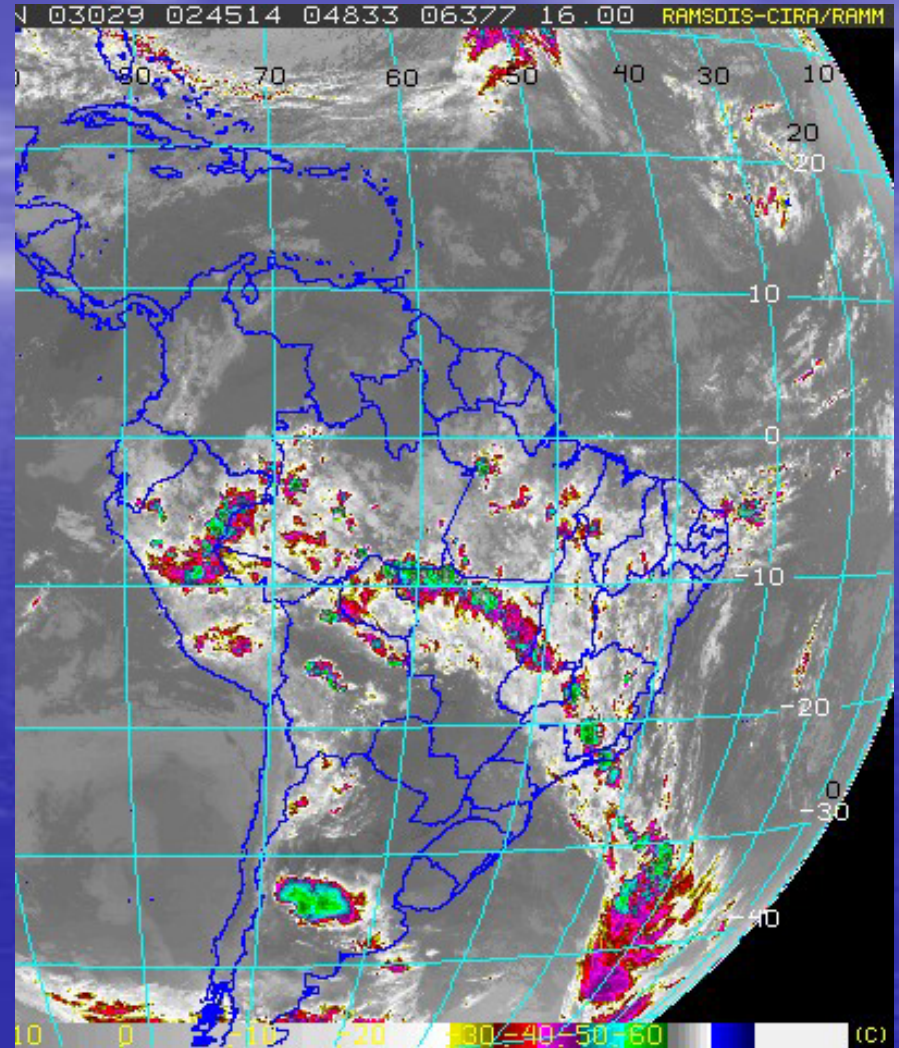
Prec.en 6 hs.(mm)- Omega (hPa/h) en 700 hPa
Eta 40km - Valido para 2003012900 - T+48h



isotachs (m/s) 850 mb Wed 00Z 29jan2003



29 JANUARY 02:45 GMT

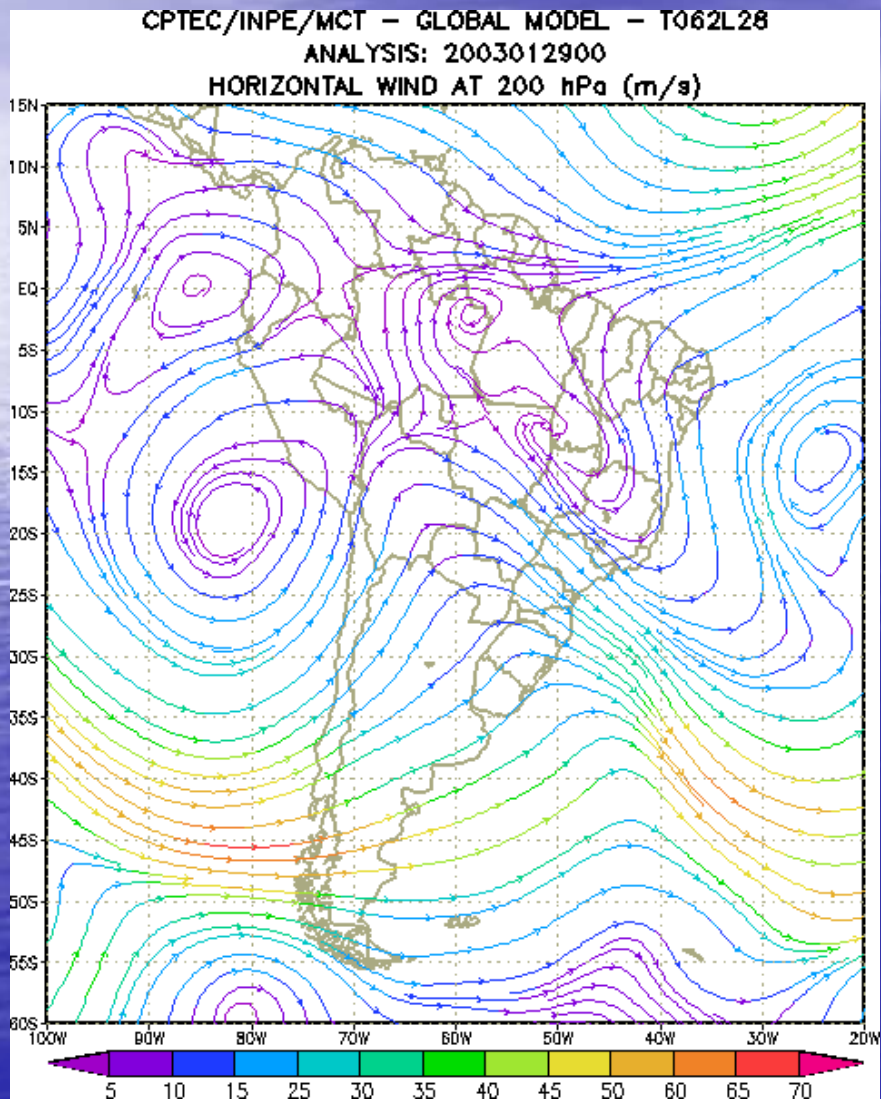


ORGANIZED CONVECTION

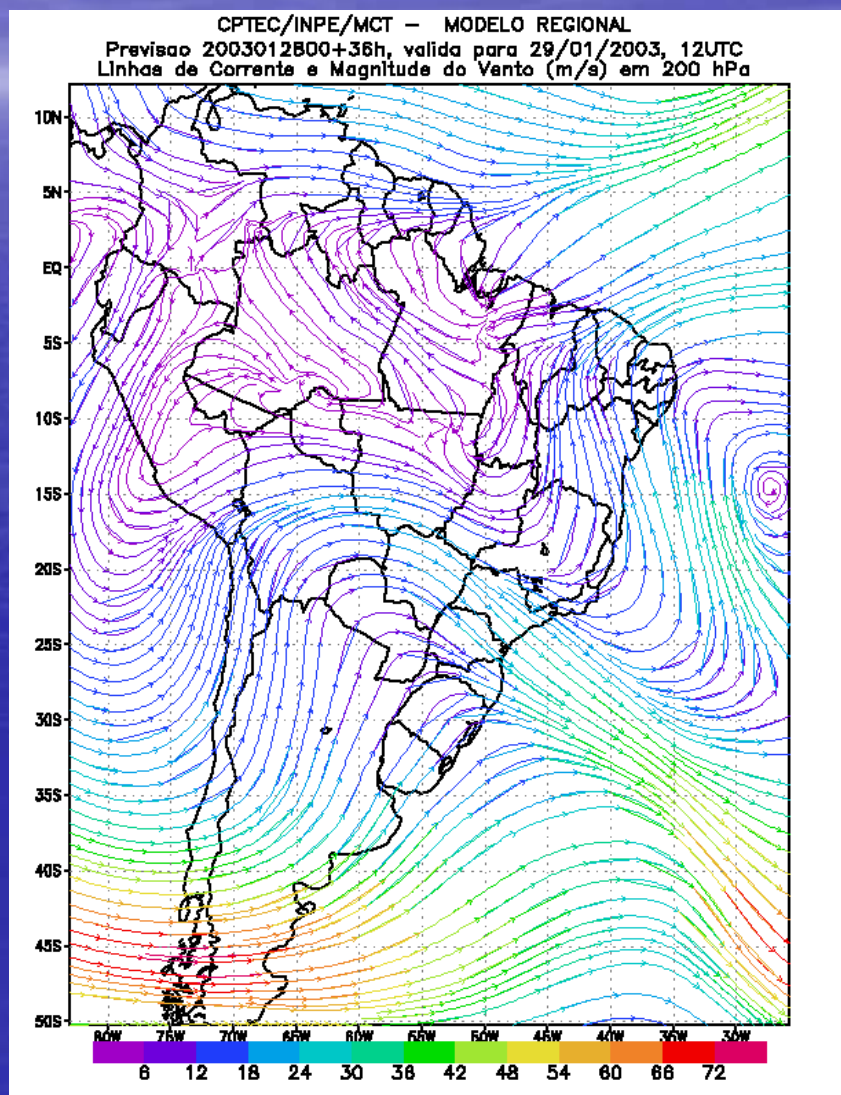
SACZ

200 hPa

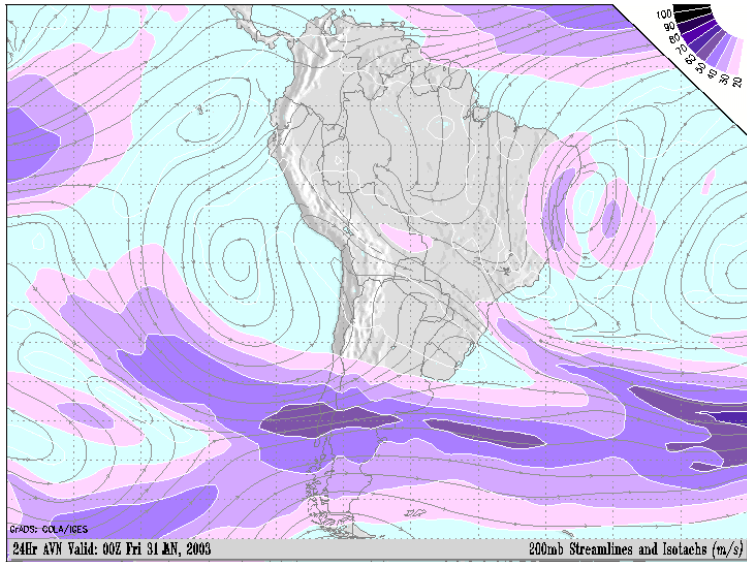
ANALYSIS 29



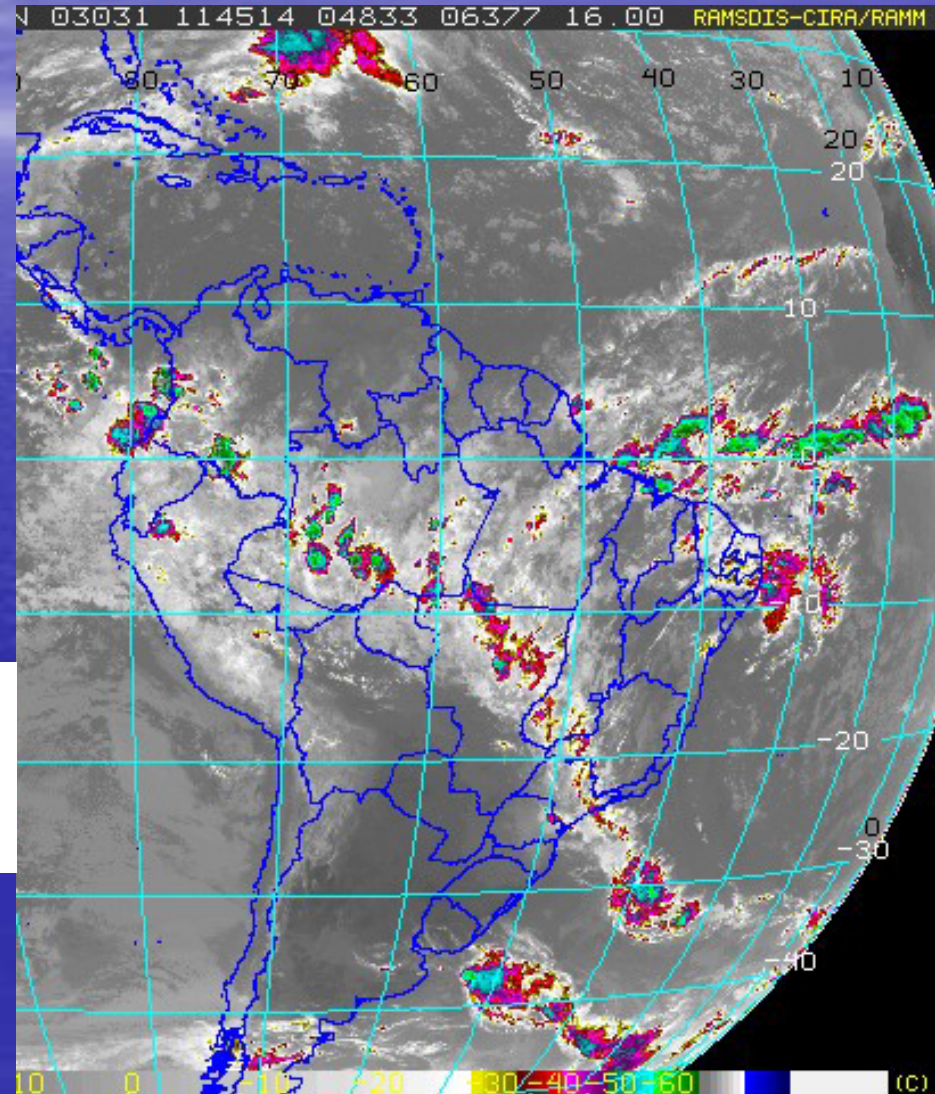
FORECAST 28 TO 29



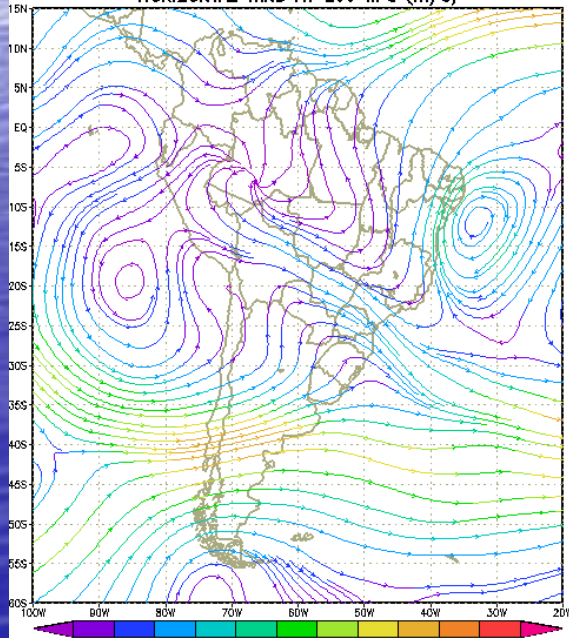
FORECAST 30 TO 31



31 JANUARY 11:45 GMT



CPTEC/INPE/MCT - GLOBAL MODEL - T062L28
ANALYSIS: 2003013100
HORIZONTAL WIND AT 200 hPa (m/s)



OTHER STUDIES

- DOWNSCALING AGCM T126
- ETA 20 km ETA 10 km ETA 5 km
- DIURNAL VARIATION LLJ (CLIMATE SIMULATION AGCM)
- OCCURRENCE OF CCMS AND LLJ

OTHER STUDIES

- PARAMETRIZATION EXPERIMENTS
- RADIATION
- CONVECTION
- SURFACE PROCESSES
VEGETATION , HUMIDITY